

Design Awards 2010

A Focus on Sustainable Development

Portsmouth is one of the few cities in the United Kingdom that is seriously threatened by sea level rise caused by the emission of green house gases. This is why the Portsmouth Society is paying special attention this year to those designs by both the public and private sectors that break new ground in sustainable development. So this has been added as a fourth judging criteria to those of previous years: a 'wow' factor, a positive contribution to the street scene, and whether the building works for the occupants.

Best New Building

15 Drayton Lane

Architect Mick Morris

Best Restoration

The Friary, Marmion Road,

Architect Gary Seymour

Commendations

Treadgold's Warehouse

Shakespeare Apartments

Commendation

Wilton Place, Southsea



*Winner of Best New Building Eco House at Drayton Lane,
with Architect Mick Morris.*

Best new building

The Society is pleased to announce that the winner of the Best New Building Award is a small private house at 15 Drayton Lane. The crisp design sits very well in the street context, it updates local features, and its internal curving lines draw you into the garden and outdoor living.

Its design was a collaborative partnership between the architect Mick Morris and his clients, the owners, a local family Stephen, Victoria & Blake Cripps. Here is a design that fits exquisitely into the street, like the Tardis, tiny outside but a large family home providing large areas of open space inside. The property is unique in being in one of only 438 certified houses in the UK that achieve this level of sustainability. Of these 438 very few are privately owned. In the main these examples have been funded by the government for social housing programmes, where code three of sustainable homes is mandatory.

The heating is produced via a ground source heat pump which collects heat from pipes laid in trenches in the garden areas, serving the under floor heating in the winter, reversed to in the summer months to cool the building. In addition to this, a large log burner provides 50% of the house's heating requirements. The hot water is produced by 7 m² of solar water panels fixed to the garage roof. Water saving measures have been introduced to restrict the flow to both taps and w/cs. This ensures a maximum of 105 litres of water per day-per person is met. Low energy lighting is used both internally and externally to ensure that electrical use has been kept to a minimum, including the use of A+ rated white goods throughout. The property is currently having 4.5kw of P V panels installed which will generate 80% of the electrical demand, due for completion within the next eight weeks. Externally the rainwater is collected and stored and is used for external taps.

Mick Morris and Steve Cripps have thrown down the gauntlet to architects and builders, challenging others to follow. The Portsmouth Society wants to encourage all development to achieve these high standards, for the sake of future generations. The construction works were undertaken by local company PMC Construction & Development Services Ltd.

Janet Storey's inspiring development in Wilton Place Southsea won a Commendation in this category: four interesting houses full of light designed by Robert Benn Architects and also built by PMC Construction & Development Services Ltd., were created on a constricted site of an old dairy, stable and

restored cottage. The scheme is a model of how to reuse small pockets of city land to create a creative and enjoyable effect.

The judges: Merrick Denton-Thompson, Graham Steaggles, Deane Clark and Celia Clark also had to consider enormous new buildings in the same category: Queen Alexandra Hospital, Highbury College, the new swimming pool and gym at the Mountbatten Centre, the Cosham Interchange block of flats and Southsea Medical Centre in Somerstown.

They praised WH Saunders' Mountbatten Centre's innovative technology, community emphasis, and the way the technical challenge of delivering Olympic performance and learning to swim were met, as well the considerable efforts in energy-saving and the beautiful timber roof of the swimming pool. They enjoyed the light airy feel of the huge new extension to Queen Alexandra Hospital by BDP Architects and Carillion Construction, and the building's contribution to energy saving and innovation in clinical facilities. The new Highbury College has an elegant foyer, staircase and light filled spine corridor, and impressive specialist teaching spaces. Photovoltaic cells above the entrance façade make considerable reductions in energy bills. The public areas of both QA and Highbury are enhanced by large photographs of Portsmouth by staff and students.



Wilton Place Southsea



Highbury College, Cosham



Queen Alexandra Hospital

Best restoration



The Friary Marmion Road Southsea.

The enjoyable and careful upgrading of Thomas Ellis Owen's block of flats, The Friary in Marmion Road Southsea by architect Gary Seymour of Seymour Bainbridge architects of Winchester and builder Winnicotts for Mr. and Mrs. Philip Hill of the Game Trust was the well deserved winner of the Best Restoration Award. The affordable flats now have both bathrooms and kitchens – shared before – and the exterior and the interior communal spaces have

been renovated. We had very positive feedback from the tenants, including the gardener who makes it a pleasure to walk by. The gates, railings and benches are by local blacksmith, Peter Clutterbuck.

There were two Commendations in this category: Richard Sexton's ambitious and impressive transformation of Treadgold's Warehouse in Aylward Street into four spectacular apartments, overcoming considerable structural challenges in the process. Steve Langton of Smith and Langton, winner of several earlier Restoration Awards converted Shakespeare Apartments, part of the substantial terrace in Elm Grove into upgraded spacious flats, creating a well designed new frontage to replace the former supermarket and symbolise the change of use. The ingenious conversion of an electricity substation in Rectory Avenue into a little house was admired. The judges also commended BAE Systems for the sparkling and elegant new entrance foyer designed by Robert Benn Associates created in the Old Iron Foundry in HM Naval Base, and look forward to completion of the conversion of the ground floor to offices.



Shakespeare Apartments Elm Grove Southsea (Malcolm Reeves)



Treadgold's Warehouse, Aylward Street, Portsea

The judges also enjoyed Bewley's conversion of the Art Deco Quay House Broad Street Old Portsmouth to large apartments, the highest with roof gardens with wonderful views. The White Swan pub in Guildhall Walk has been given a spectacular new interior with a dramatic central bar designed by Carly Witt of K.D. Paine Associates Ltd, and the stained glass windows of the Air Balloon, severely damaged by a fire, have been carefully recreated in the conversion to flats.

No landscaping award this year

Although there were no Landscape Awards this year, the judges commended the City Council's adventurous play areas in Victoria Park and Aylward Street Portsea. They hope to judge the restoration of the Guildhall Clocktower next year - though access may be difficult!

Celia Clark, President



The Old Iron Foundry, HM Naval Base - reception.

The Big Event



Portsmouth Society committee member, Sue McClory, meets Linvoy Primus at the Big Event.

“the work that these organisations do is rarely seen or recognised. This event makes the public more aware of the fact that they play an important, often crucial role in all walks of life”

The free event was also open to the public and throughout the day hundreds of visitors toured stalls and watched displays, presentations and entertainment from various organisations.

Linvoy Primus, of Pompey football club fame and co-founder of Faith and Football presented the Volunteer of the Year Awards to local volunteers and acknowledged how their efforts “make a difference” and touch the lives of many ordinary people providing help, support and encouragement.

Blitz Memorial

Terry Halloran would like to thank all who supported his campaign for a memorial to those who died in the 1941 Blitz at 101 High Street. There will be a Commemorative service at St. Thomas’s Cathedral in Old Portsmouth on the 70th anniversary, 10 January 2011, at 11.30 followed by a wreath laying by the Lord Mayor. *All are welcome.*

Sheila Hancock OBE, launched the Big Celebration of the city’s Voluntary and Community Organisations at Buckland Community Centre on 22 September. Sue McClory represented the Portsmouth Society there having set up a display showing the work of our organisation.

The event brought together more than 40 organisations representing a wide spectrum of activity in the city to show what they do and why they do it. They also used it as a time to spread the word that more volunteers are always needed.

Sheila Hancock, the chancellor of the University of Portsmouth, said

Civic Day 2011

Civic Voice has adopted Saturday June 25th 2011 as 'Civic Day' nationwide and Societies have been asked to register in order to declare their interest. It is hoped that Societies will raise their profile in the community and showcase their work. The Executive Committee has registered.

A sub-committee has been appointed consisting of myself, Sue McClory and John Holland and we shall hope to elicit the support of others as the advance planning continues. At present, we are considering the following as possibilities:-

1) A Schools' Project

We shall hope to work across a Year Group e.g. Year 7 (the first year) in Secondary Schools. It will be important to gain the support of the Local Authority Adviser and the Head Teachers. We have chosen the topic 'What I like about my City'. We shall invite contributions involving literacy, art, photography and IT. We want to be inclusive and to involve students of all abilities. It is hoped to end with an exhibition of students' work and to award some prizes and certificates.

2) An Exhibition (Highlighting the work, interests and involvement of the Society). A photographic exhibition encapsulating the work of the Society, possibly in the Cascades shopping centre. We could also run a stall at some time, with our flyers, posters and examples of newsletters.

3) Tree Walk and 'Your favourite Tree'

There will be a Tree ID walk around Old Portsmouth in the run up to Civic Day itself and there will be a 'Your favourite Tree' promotion.

These are initial ideas and they will of necessity involve the cooperation of others, so we are unable to guarantee outcomes at present Watch this space!!

For more information on the Civic Day please see the Civic Voice Web site at www.civicvoice.org.uk/campaigns/civic-day



Terry Carter, Hon Secretary

Meet the committee – part 2

David Baynes.



Continuing our series on the society's committee members, we meet David Baynes, Vice Chairman.

I grew up in the Edwardian spa town of Harrogate on the edge of the Yorkshire Dales, where 200 acres of 'The Stray' equates to Southsea's Common. After 'finishing' my education with 3 months as a bus conductor, I moved to London and worked in Bloomsbury for the British National Bibliography which creates catalogue records for all newly published UK books for libraries worldwide. Before going to library college in West London I

lived very near to the remarkable Horniman Museum in Forest Hill, an area I had known since the age of 4, through a family connection. It was during my annual visits in that post-war period that my life-long love of London and its buildings began.

After Jackie and I married in 1967, we acquired a Taylor-Woodrow semi (£4950!), a bed and 2 kitchen stools in Crawley New Town. In retrospect, the post-war New Town phenomenon was an incredible success, in spite of the media's delight in constantly focussing on the negative aspects. Crawley was unique in that, apart from containing extensive Wealden woodland, only one (very upmarket) high rise apartment development was included in the masterplan. This was because a survey of the company workers who would be coming from South London showed that they overwhelmingly wanted 3-bedroom houses with a garden and that was what was duly delivered, with wide grass verges to go with them. That remains the case today, with office blocks and in more recent times, numerous hotels to serve nearby Gatwick Airport being virtually the only high-rise architecture.

At that time we both ran libraries for engineering companies. After 6 years I joined the Central Electricity Generating Board's research laboratories in Surrey, helping scientists and engineers solve problems and reduce power station costs, at a time when demand for electricity was at an all time high

and rising year by year. Environmental control became a major focus and the CEGB was then the largest employer of biologists in the UK – although these days I guess they would be called environmental scientists. With the privatisation of the power industry the site closed and I moved to a nearby electronic product development and certification company, as we did not wish to move from Crawley where Jackie was running her children's bookselling business.

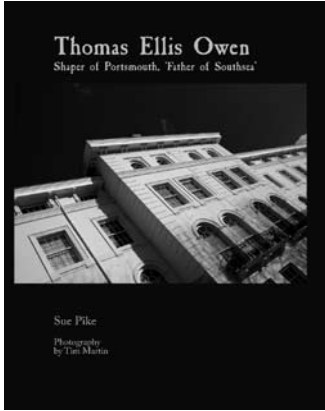
In 1996 we set up a tour-guiding business, taking American tourists around the South of England and on guided tours in London. Finally, after 34 years in Sussex we moved to Old Portsmouth. New town to old towns I guess, but to a city in some ways similar to our early days in Crawley – go away on holiday and return to find yet more new building projects have started-up!

Heritage Weekend, Southsea Castle



We attended the Heritage Weekend at Southsea Castle in October where Sue McClory set up an attractive display of the Portsmouth Society's work and recent achievements. The free event included tours of the castle plus demonstrations of crafts including architectural carving, gilding, brick and lime work, decorative plasterwork, scagliola, stencil cutting and painting, plaster mould making, graining & marbling, thatching and wattle & daub.

New Books



Thomas Ellis Owen – Shaper of Portsmouth, 'Father of Southsea'

Full colour, hardback book, 220 pages, £25
Published by Tricorn Books, December 2010.
ISBN 9780956249869

Available from 3rd December is a new book about the architect of Southsea, Thomas Ellis Owen. This illustrated biography, written by Sue Pike and with photographs from Tim Martin is published by Tricorn Books and designed by 131 Design. Its 220 full colour pages contain original photographs, illustrations, maps and architects'

plans, as well as a unique collection of contemporary photographs of many of his buildings, commissioned for this project. We look forward to reviewing the book in our next newsletter. You can reserve your copy now by contacting Sue Pike on 023 9282 5937 or by emailing pikeclive@aol.com. You can also order copies via the Thomas Ellis Owen Web site at www.thomasellisowen.co.uk.



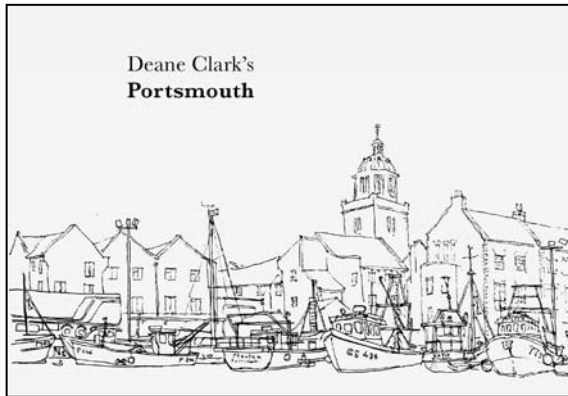
The Tricorn Life and Death of a Sixties Icon

Full colour, softback, 268 pages, £19.99
Published by Tricorn Books
ISBN 9780956249852

The Tricorn Life and Death of a Sixties Icon, Celia Clark and Robert Cook's book designed by Gail Baird and Dan Bernard of 131 Design and published by Tricorn Books in Old Portsmouth sold out of its first black and white edition. We had three reviews: in Building Design, Icon magazine and the Twentieth Century Society's Journal. The reprint - in full colour - has almost sold out too.

The last remaining copies are at Waterstones, Commercial Road, where the authors will be signing the book between 11 am and 3pm on Sat 20th Nov. - with music supplied by Robert and Christine Cook.

Deane Clark's Portsmouth, published by Tricorn Books, December 2010. ISBN 9780956249883. Full colour, hardback, 160 pages, £18.95



Deane Clark's Portsmouth celebrates fifty years of his drawings of Portsmouth and his work as Historic Buildings Architect. His book, designed by 131 Design and published by Tricorn Books, includes the familiar and the 'gone but not forgotten'. Each picture is annotated with a short history and many are in colour. Suggested price: £18.95, cheques to Deane Clark. Obtainable from 8 Florence Road Southsea PO5 2NE.

English Heritage Protection Process – now on-line



ENGLISH HERITAGE

English Heritage has developed an online application which allows submission of applications for designation, de-designation or amendments for the various heritage assets. They receive around 2,000 applications a year, from a wide range of sources, to designate a heritage asset.

If you would like to nominate a heritage asset for designation they would be pleased to hear from you. Please follow the link below to the online application form but note that they are unable to process applications that do not include clear, current, colour photographs of the asset, or applications that are incomplete.

Link: www.english-heritage.org.uk/professional/designation/process/online-application-form

Portsmouth Tree Wardens

The Tree Wardens committee had a constructive meeting on 16 September with PCC's Tree Officer, Stuart Campbell, and Senior Landscape Architect Peter Burrend-Lucas, together with Jon Stokes, a Director of the Tree Council.

We have also had a meeting with Mary Devaney, Project Leader, about the planting of trees in the regeneration of Somers Town, the first phase of which is the subject of a planning application. At the same time I spoke to Vince Mount about the Mile End replanting scheme which has been extended to right up to the roundabout as you may have noticed. More tree felling but I think they are right in this case.

We have been actively sorting out, with Stuart Campbell, a site for the Mayoral Tree Planting to celebrate National Tree Week and the launch of the National Tree Planting Campaign. "Plant a Million Trees." We are also planning the planting of a fruiting hedge along the cycle path by Hilsea Halt.

A few of us attended the SE Tree Warden Forum near Crowborough on 16 October. It was a very interesting and informative day with a guided walk through Ashdown Forest in the afternoon.

The society has suggested that the former Tricorn car park could be greened with trees planted in tubs to break up the monotony of the expanse of tarmac. Progress is slow.

Pauline Powell



The Editor adds: *Tree planting of the fruiting hedge alongside the new footpath / cyclepath at Hilsea Station (Devon Road northwards) takes place on 26, 27 and 28 November daily from 10.30am. Green-fingered volunteers are most welcome to come along and help. Bring tools if possible and we suggest you wear gloves and strong footwear. More information from Pauline on 023 9266 7962*

Transfer of Assets

I recently attended a Transfer of Assets Conference at Shoreditch Town Hall in East London. Shoreditch Town Hall itself is a good example of an imaginative scheme, which arose as a result of Asset Transfer. When the London Boroughs were reorganised Shoreditch Town Hall was no longer required for Civic purposes. The building is a baroque structure in Portland stone dating from 1866 which was designed by Caesar Augustus Long. The building reopened in 2005 after refurbishment for cultural and community use. Rents from small business units help to make the cultural and community uses viable. Today the building is run by a Trust

One of the main speakers at the Conference was Barry Quirk, Chief Executive of Lewisham and author of the Quirk Report which sets out the rationale for transfer of assets from Local Authorities to Local Communities. Quirk pointed out strongly that Local Authorities are not charitable institutions. They have to balance community aspirations with overall budgetary considerations. A substantial percentage of Local Authority revenue is statutorily required to be spent on, for example, education and social services, substantially reducing what is available to be spent elsewhere. Quirk mentioned that not one swimming pool in London is making a profit at present and by contrast he mentioned the Wash House Act of 1846 whereby bathing facilities and washing (laundry) facilities were provided for the poor under one roof. This he suggested was some imaginative thinking. He also said that Local Authority spending will be further squeezed by the cuts and he mentioned that he knows of one Authority who is discussing closing all Community Centres unless they can be 'transferred'.

Where appropriate multiplicity of usages should be considered as in the case of Shoreditch Town Hall and with big schemes look around for entrepreneurs with funding who may have ideas for development.

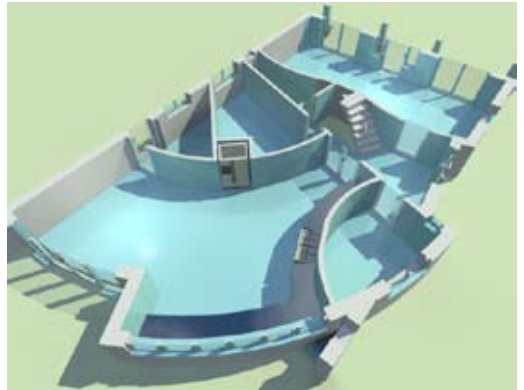
It is vital that there should be a Business Plan in place covering at least the first 5 years and remember that projected revenue will be as important as capital. In some circumstances Development Trusts and Building Preservation Trusts may be able to help. Explore all funding streams before you start and before applying to The Heritage Lottery Fund. Many schemes have failed because they have been unrealistic and therefore unsustainable.

And by the way, it is important that Local Authorities should budget for maintenance of the Assets which they do own!! *Terry Carter, Hon Sec.*

More on.....The Design Awards



The Old Iron Foundry, HM Naval Base



15 Drayton Lane interior impression

Fortifications on the South Coast

February's audiovisual presentation is based on a series of exhibitions, 'Barriers South' that toured different venues last year: Eastbourne Redoubt, Newhaven Fort, the Crypt Gallery Seaford, Spitbank Fort, Round Tower & Hurst Castle. The work focused in areas of the south coast that have been informed by military presence - on how its presence and activity affected the landscape, people and surrounding area. The exhibitions explored each of the venues as alternative 'gallery' spaces using photography, projection, installation and sound to develop six site-specific bodies of work. The exhibitions also demonstrated another way forward for these splendid structures that highlights their historical and cultural significance, using contemporary and accessible media. Do note this is in the Square Tower in Broad Street, Old Portsmouth - a very fitting and sympathetic venue!

Recruit a friend!

We are including a Portsmouth Society membership form in each copy of this newsletter in the hope that you might pass it to a friend and encourage them to join. As well as a wide and varied programme of talks and events, members carry out a lot of work to further the aims of the Society, that is to keep and care for the best of Portsmouth's buildings, heritage parks and open spaces and to encourage well designed new buildings and amenities. It's a worthy cause so please help us to increase our membership.

THE PORTSMOUTH SOCIETY - MEMBERSHIP APPLICATION FORM

Name

Address

.....

.....Post Code

Phone Number.....

Email Address

I enclose cash* / cheque*/Postal order made payable to:

The Portsmouth Society for £..... (*Please delete as necessary)

Type of membership (annual rates): Full (£10) Joint (£15)

Senior (£8) Senior couple (£10) Student (£5)

Please tick if you have any specialist interests : Historic Buildings

Planning Transport Trees & Shrubs

How did you hear of the Society?

.....

Signed

Date

Please send completed forms with remittance to:

The Membership Secretary, The Portsmouth Society, 6 Livingstone Road
Southsea, Hampshire, PO5 1RT.

Visit our web site at www.portsmouthsociety.org.uk, telephone 023 9282 1667 or
email to: mailbox@theportsmothsociety.or.ok for more information

The Portsmouth Society, Registered Charity no. 266116. As a registered charity we run a Gift-Aid scheme for UK tax payers, please ask for details. Data Protection: We will record only the details you supply on this form solely for administrative purposes. We will not pass this information to any third party without your prior, written, consent.

Meetings and Events

<p>Meetings are on the first Wednesday of each month (not Jan/Aug/Sep). They are normally at the University's St George's Building, St Thomas's St, Old Portsmouth which has free on-site parking and is served by buses 5, 6, 23 & 700. There is no admission charge - all are welcome. For the latest programme see www.portsmouthsociety.org.uk</p>	
<p>Wednesday 1 December 7.00pm</p>	<p>Design Awards winners & losers. Our president, Dr Celia Clark, will give her annual hard-hitting presentation on the 2010 competition.</p> <p><i>Coffee from 6.45pm</i></p>
<p>Wednesday 2 February 7.00pm. Square Tower, Broad Street, Old Portsmouth</p>	<p>Fortifications on the South Coast - An audiovisual presentation from Gail and Dan Baird of 131 Design. Please note that this talk will be held at the Square Tower in Old Portsmouth.</p> <p><i>Coffee from 6.45pm</i></p>
<p>Wednesday 2 March, 7.00pm</p>	<p>Portsmouth Planning & Archaeology - Dr Andy Russel, Manager of Southampton City Archaeology Unit and also their Ancient Monuments Officer, will explain how archaeology work is commissioned by Portsmouth City Council, talk about past results and consider their implications for the future of Portsmouth's archaeology</p> <p><i>Coffee from 6.45pm</i></p>
<p>Wednesday 6 April, 7.00pm</p>	<p>Annual General Meeting plus guest speaker</p> <p><i>Coffee from 6.45pm</i></p>
<p>Wednesday 4 May, 7.00pm</p>	<p>Monthly Meeting. Details to follow.</p> <p><i>Coffee from 6.45pm</i></p>

President: Dr Celia Clark. Vice-president: Dr Roger James

Chairman: Bob Adderley, 26 Rose Tower, Clarence Parade, Southsea, PO5 2HX
Tel:023 9229 7103

Secretary: Terry Carter, 15 Balliol Road, Portsmouth PO2 7PP Tel: 023 9269 9167

Treasurer: Jean Thompson, 6 Livingstone Road, Southsea, PO5 1RT
Tel: 023 9282 1667